



**HEALTHCARE
EXPERTS,
MEET HYGIENE
EXPERTS**



**Convenient, Wearable
Hand Hygiene Devices**



**Supports Uninterrupted
Workflow Patterns**



**Cloud-Based Reporting
Reflects Hand Hygiene
Activity in Real Time**



**Personalized Data Enables
Positive Reinforcement**

*GP PRO Proprietary Research (2019):
CSP-19-2005

**Clinically
proven to
help promote
proper hand
hygiene***



Transforming Hand Hygiene with Wearable, Workflow-Friendly Technology

SafeHaven® Personal Hand Hygiene Monitoring System



HEALTHCARE



Georgia-Pacific



SEE SAFEHAVEN VIDEO

Scan QR code with smartphone camera or [Click Here](#)

Hand Hygiene at the Point of Care

A Breakthrough for Infection Prevention and Patient Safety

At last, clinicians can improve hand hygiene without interrupting workflow or patient care. The SafeHaven® system combines a wearable, wireless sanitizing device with reliable cloud-based reporting to help improve hand hygiene practices and reduce HAI risks.



CONVENIENT, WEARABLE HAND HYGIENE DEVICES

Wearable technology allows continued bedside presence and gives patients visual evidence of hand hygiene events.



SUPPORTS UNINTERRUPTED WORKFLOW PATTERNS

The by-your-side device fits seamlessly into clinical workflow, reducing labor redundancy of traveling to hallway or cross-room dispensers.



SYSTEM IMPLEMENTATION: EASY AS 1-2-3

No wires to run, no sensors to install, no infrastructure to set up.



CLOUD-BASED REPORTING IN REAL TIME

The system accounts for all 5 Moments for Hand Hygiene¹, with monitoring and system management centralized on the SafeHaven dashboard.



PERSONALIZED DATA ENABLES POSITIVE REINFORCEMENT

Continuous, real-time feedback on SafeHaven devices promotes awareness and accountability and can become a positive part of unit culture 24/7.

- 1 **Activate SafeHaven Devices and Start Using.**
- 2 **Plug Base Station/Dashboard into Internet.**
- 3 **Data Will Upload Automatically.**

Overcoming Barriers and Complying with Hand Hygiene Policy

Research confirms the challenges clinicians face with hand hygiene compliance, including situations where convenient access to sanitizer is limited. In fact, just 39% report following their facility's policy all the time.² With SafeHaven®, wearable personal hand hygiene devices enable clinicians to sanitize hands anytime, anywhere—even in critical moments.



SEE THE INFOGRAPHIC

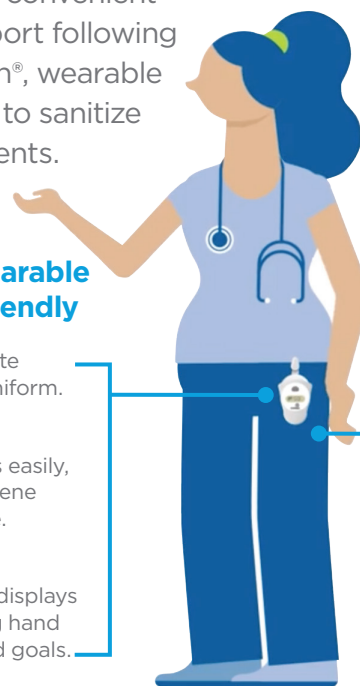
"TOP 5 BARRIERS TO HAND HYGIENE"

Scan QR code with smartphone camera or [Click Here](#)



SafeHaven® is Wearable and Workflow Friendly

- ✓ Healthcare associate wears device on uniform.
- ✓ Sanitizer dispenses easily, allowing hand hygiene anytime, anywhere.
- ✓ Personalized data displays on device, showing hand hygiene events and goals.



- ✓ Convenience supports uninterrupted workflow and continuous patient care.
- ✓ Refill pods are simple to switch out.
- ✓ Devices link wirelessly to centralized dashboard for data visibility in real time.

¹5 Moments for Hand Hygiene," WHO Guidelines on Hand Hygiene in Healthcare, World Health Organization, 2009
²Georgia-Pacific Proprietary Research: NCT-21-5430

A MEASUREABLE HAND HYGIENE ADVANTAGE

Seamless Monitoring & Reporting in Real Time

The SafeHaven® system provides an efficient framework to help organizations measure, assess and improve hand hygiene performance. Advantages include:



CENTRALIZED, AUTOMATED DATA CAPTURE

Compliance reporting to accreditation bodies is a constant, and the automated SafeHaven system centralizes hand hygiene data within an efficient dashboard for easy, organized access.



EASY SYSTEM INTEGRATION (NO SENSOR NETWORKS REQUIRED)

Some electronic-counting and zone-based monitoring systems require sensor network installations in wall dispensers or entryways. SafeHaven personal devices come wirelessly equipped right out of the box. And the full system integrates after plugging the SafeHaven Base Station/Dashboard into an internet line. It's that easy.

CAN REDUCE LABOR AND INSTALLATION COSTS

Direct observation (secret shopper) monitoring can require significant investment in time and labor. And on-site sensor networks can be expensive to install. With SafeHaven, reporting is automated in real time, with no need to install on-site sensors.



of healthcare workers (HCWs) expect a better hand hygiene compliance method than Secret Shopper.¹

¹GP PRO Proprietary Research: CSP-15-015.



SafeHaven.



INDIVIDUAL AND GROUP-LEVEL REPORTING

With most hand hygiene monitoring methods, individual-level measurements aren't possible. But with SafeHaven, both group and individual data are reported, allowing individual accountability, rewards and coaching as needed.

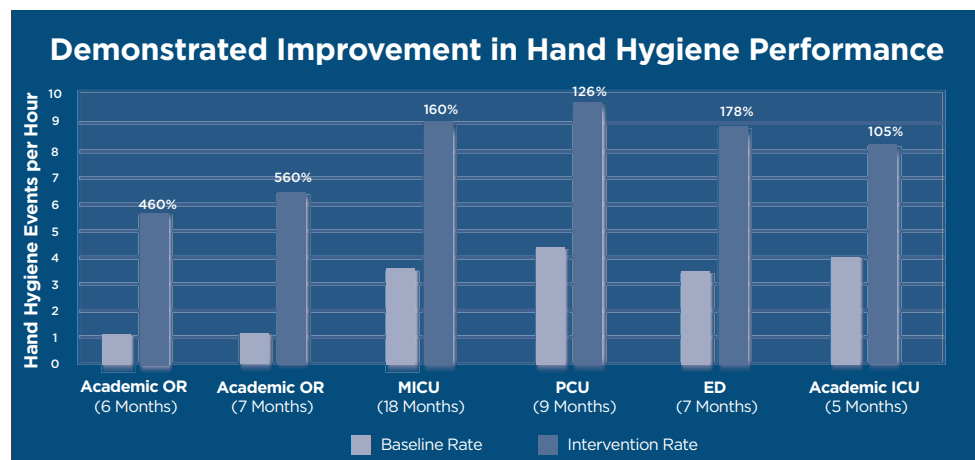
MONITORING IN REMOTE SETTINGS

The SafeHaven system, with its personal hand hygiene devices, allows compliance measurement in settings where it may not be otherwise possible (e.g., home health, anesthesiology).



Changing Behaviors, Improving Compliance, Protecting Patients

Reducing barriers to hand hygiene and access to reliable compliance data are foundational to improving performance. Indeed, studies show a personal, wearable device can increase frequency of hand hygiene. And allowing clinicians to track and meet personal goals directly on their SafeHaven device can help them improve hand hygiene habits ... and protect both patients and themselves.



GP PRO Proprietary Research: CSP-19-2005, Trial periods lasted an average of 8.5 months.

“It’s incredible having insight into our staff’s hand hygiene performance and being able to recognize top performers.”
 Manager of Infection Prevention, BSN, RN, CHPN

183%
increase in hand hygiene events among HCWs who used SafeHaven.*

6+ MONTHS
Sustained improvement in hand hygiene after SafeHaven® intervention.*

Connect with a Consultant About SafeHaven®

Ready to learn more about the SafeHaven system and how it can be seamlessly added to your teams’ your clinical workflow? Connect with a GP PRO consultant today via the contact info below.



SEE OUR HEALTHCARE SOLUTIONS BUNDLE

Scan QR code with smartphone camera for [Product Page](#)

*GP PRO Proprietary Research (2019): CSP-19-2005. Trial period lasted an average of 8.5 months.

gppro.com

1-866-HELLOGP (435-5647)



Georgia-Pacific